

LOCATION SKETCH

A PLAT
OF
259.32 ACRES

STATE OF SOUTH CAROLINA
COUNTY OF ORANGEBURG
LIMESTONE & ELIZABETH
TOWNSHIP

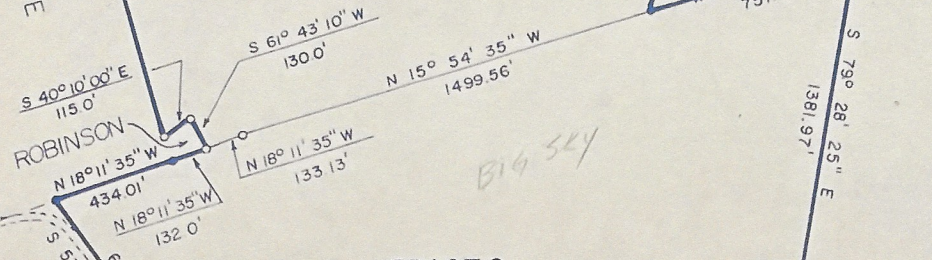
PREPARED FOR
WILLIAM W. DUKES, JR.

NORTHSIDE COUNTRY CLUB

RICHARD E WOLFE

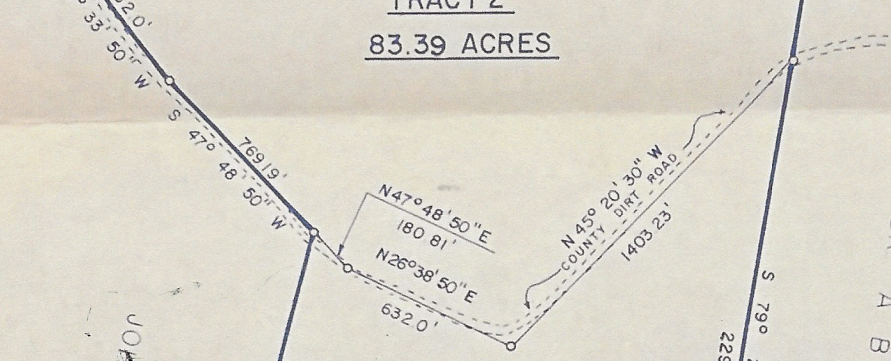
TRACT 3
64.61 ACRES

Covey Rise 1981



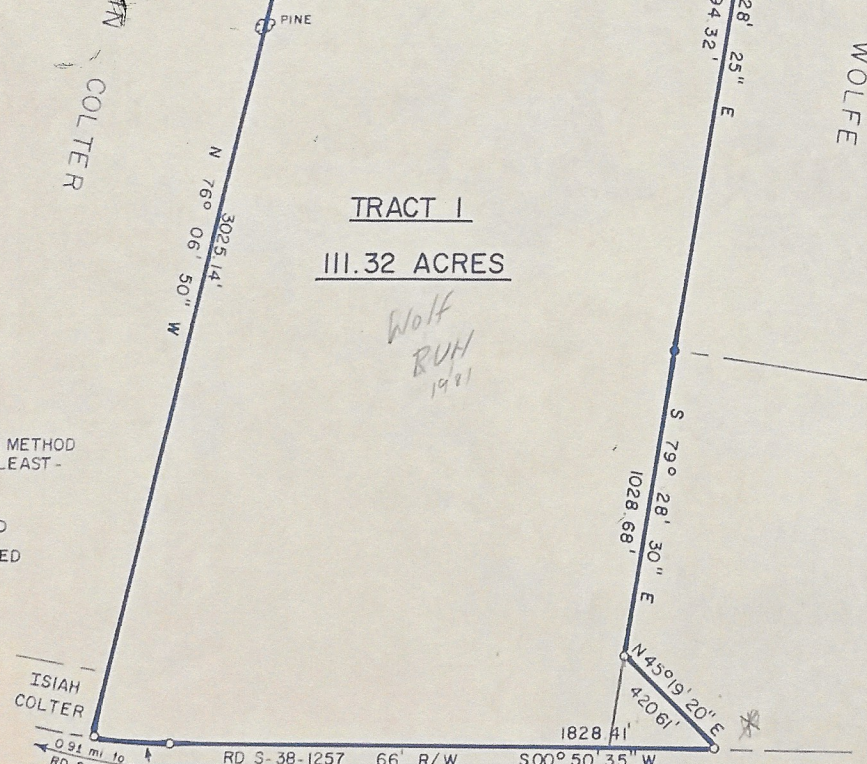
TRACT 2
83.39 ACRES

Big Sky



TRACT 1
111.32 ACRES

Wolf Run 1981



ISIAH COLTER

0.91 mi. to RD. S-38-60

$\Delta = 07^{\circ} 56' 05''$
RAD = 1876.86'
ARC = 260.16'
S 04° 48' 50" W 25995'

AREA BY DMD METHOD
PRECISION AT LEAST -
1/7,500

- IRON FOUND
- IRON PLACED

REF PLAT FOR THOMAS R. WOLFE BY JOHN K. DAVIS, R.L.S. DTD JAN 12-17, 1956 PB 13, PG 201.

PLAT FOR A. D. GRIFFITH BY H. FRANK O'CAIN, CE. REC. PB. 10, PG. 123.

PLAT BY A. I. SCHISLER, SURVEYOR DTD JUNE 2, 1932 PB 7, PG 190.

PLAT FOR W. C. WOLFE, III BY JOHN K. DAVIS, R.L.S. DTD DEC 22, 1955.

PLAT FOR DR. A. B. WOLFE BY E. S. A. DTD DEC. 23, 1976.

W. W. Dukes, Jr.